



diamond member



UPGRADE MENU

STUDIO
ESSEX

MEDICAL SPA

HEIGHTS PLASTIC SURGERY



Hydra Facial

Hydra Facial

A HydraFacial is a non-invasive and multi-step facial treatment that combines several skincare techniques to cleanse, exfoliate, extract impurities, and hydrate the skin. This innovative facial is designed to improve the overall health and appearance of the skin.

ADD-ON SERVICES

\$25 - 10 Minute Head and Shoulder Massage

\$25 - Steam and Extractions

\$25 - High Frequency Treatment

\$75 - ZO Serum Accelerator [Brightalive, Firming or Rozatrol]

\$90 - Dermaplaning

\$100 - IV Drip [Hydrate or Meyers]

EXTEND TREATMENT AREA

\$50 - Chest

\$150 - Back

**Prices are subject to change without notice. All prices listed are in addition to monthly membership dues and already include any discounts DCM are eligible for. Some restrictions may apply. Cannot be combined with any other offer.*



Chemical Peel

Chemical Peel

Our Diamond Member chemical peel is the perfect “Lunchtime” peel with no downtime. This peel sloughs away dead skin cells and superficial blemishes to reveal clear, fresh skin underneath. It also stimulates cell turnover for ongoing skin health. It can be performed as often as once a week.

ADD-ON SERVICES

\$25 - 10 Minute Head and Shoulder Massage

\$25 - Steam and Extractions

\$25 - High Frequency Treatment

\$75 - ZO Serum Accelerator [Brightalive, Firming or Rozatrol]

\$90 - Dermaplaning

\$100 - IV Drip [Hydrate or Meyers]

EXTEND TREATMENT AREA

\$50 - Chest

\$150 - Back

Take your treatment to the next level
with an upgraded treatment option



**Prices are subject to change without notice. All prices listed are in addition to monthly membership dues and already include any discounts DCM are eligible for. Some restrictions may apply. Cannot be combined with any other offer.*



ZO SKIN HEALTH
BY ZEIN OBAGI MD



RETINOL CRÈME
COMPLEX

Net Wt. 2.5 g / 0.09 Oz.



ZO SKIN HEALTH
BY ZEIN OBAGI MD
RETINOL CRÈME
COMPLEX
FOR PROFESSIONAL USE ONLY
8 mL / 0.27 FL. Oz.

ZO SKIN HEALTH
BY ZEIN OBAGI MD



HYDRATING CRÈME
Crème hydratante

Wt. / Poids Net 58 g / 2 Oz.



ZO SKIN HEALTH
BY ZEIN OBAGI MD
HYDRATING CRÈME
Crème hydratante
FOR PROFESSIONAL USE ONLY
8 mL / 0.27 FL. Oz.



ZO SKIN HEALTH
BY ZEIN OBAGI MD
PEEL SOLUTION
FOR PROFESSIONAL USE ONLY
8 mL / 0.27 FL. Oz.

Chemical Peel Upgrade

TAKE IT TO THE NEXT LEVEL - UPGRADE YOUR TREATMENT

The chemical peel on our diamond membership is the perfect monthly treatment with reduced downtime, but if you are looking to take your treatment to the next level consider upgrading to a more powerful chemical peel.

\$146 - ZO 3 Step Peel

WHAT IS THE ZO 3 STEP PEEL?

ZO 3 Step Peel is an innovative, in-office treatment peel followed by an at-home treatment to combat the signs of aging + skin discoloration. The treatments utilizes a blend of exfoliants, retinol and multi-action agents to help improve skin health and treat many signs of aging.

HOW MUCH DOWNTIME IS NEEDED?

Your skin will be tender and will begin to shed about three days after treatment. This can last 5 - 9 days post-treatment and varies by patient. Most patients should avoid direct sunlight for a week following treatment or additional protection actions should be taken.

**Prices are subject to change without notice. All prices listed are in addition to monthly membership dues and already include any discounts DCM are eligible for. Some restrictions may apply. Cannot be combined with any other offer.*



Facials

Facials

[Signature Facial, Acne Facial and Dermaplaning Facial]

Regular facials improve skin texture, reduce the appearance of fine lines, wrinkles, and acne scars, help reduce pore size, increase the effectiveness of your home care routine, deep cleanse pores to help prevent future breakouts, and, most importantly, promote relaxation.

ADD-ON SERVICES

\$25 - 10 Minute Head and Shoulder Massage

\$25 - Steam and Extractions

\$25 - High Frequency Treatment

\$75 - ZO Serum Accelerator [Brightalive, Firming or Rozatrol].

\$90 - Dermaplaning

\$100 - IV Drip [Hydrate or Meyers]

EXTEND TREATMENT AREA

\$50 - Chest

\$150 - Back

**Prices are subject to change without notice. All prices listed are in addition to monthly membership dues and already include any discounts DCM are eligible for. Some restrictions may apply. Cannot be combined with any other offer.*



JPL

IPL

IPL PhotoFacial uses precise amounts of visible light (IPL is ‘intense pulsed light’) to effectively treat facial redness and improve sun-damaged skin. The light energy is absorbed by the damaged tissue resulting in a stimulation of the production of collagen.

EXTEND IPL TREATMENT AREA

\$75 - Hands

\$169 - Neck

\$338 - Neck & Chest

Take your treatment to the next level
with an upgraded treatment option



**Prices are subject to change without notice. All prices listed are in addition to monthly membership dues and already include any discounts DCM are eligible for. Some restrictions may apply. Cannot be combined with any other offer.*



NPL Deluxe Upgrade

IPL Deluxe Upgrade

TAKE IT TO THE NEXT LEVEL - UPGRADE YOUR TREATMENT

The IPL treatment on our diamond membership is the perfect monthly treatment but if you are looking to take your treatment to the next level consider upgrading to a more powerful laser treatment.

\$200 - IPL Deluxe

EXTEND IPL DELUXE TREATMENT AREA

\$75 - Hands

\$169 - Neck

\$338 - Neck & Chest

WHAT IS IPL DELUXE?

Our IPL Deluxe Treatment which includes our tried-and-true IPL photofacial laser to target pigment can now be enhanced by adding our 1540 laser to target fine lines and wrinkles in the same visit. Additional appointment time and topical numbing is required for this treatment. Most patient's don't experience any additional downtime than what they experience with regular IPL.

**Prices are subject to change without notice. All prices listed are in addition to monthly membership dues. Some restrictions may apply. Cannot be combined with any other offer.*

Alastin Nectar

REGENERATING
SKIN NECTAR
with Hyaluronic Acid

ALASTIN
SKINCARE

1.0 Fl. Oz. 29.6 mL



SkinPen Prep Skincare

PURCHASE ALASTIN SKIN NECTAR AT 20% OFF

The biggest value of our 12-month Diamond Membership are the 3 SkinPen treatments [\$1,350 value] it includes. Microneedling helps uncover smoother, more radiant, younger-looking skin in as little as 1 treatment [best results seen with 3 - 5 annual treatments]. When paired with our Alastin Nectar we can enhance your results and decrease your downtime by helping strengthen your skin ahead of treatment with this medical grade scientifically proven skincare.

BENEFITS OF ALASTIN REGENERATING SKIN NECTAR

- Enhances cosmetic treatment results.
- Calms post-procedure skin and helps reduce recovery time with Arnica, Phytoene, Phytofluene, and Narigenin with Panthenyl Triacetate.
- Helps strengthen skin ahead of cosmetic treatments to improve the appearance of smoother, brighter, more youthful-looking skin afterward.
- Water-free, preservative-free, and bacteriostatic formulation.
- Includes TriHex Technology® to support the production of new, healthy elastin and collagen.

**Prices are subject to change without notice. All prices listed are in addition to monthly membership dues. Some restrictions may apply. Cannot be combined with any other offer.*



SkinPen

SkinPen

SkinPen creates hundreds to thousands of “micro” skin punctures per second to stimulate the skin's natural wound healing process - inflammation, proliferation, and remodeling - to prompt tissue remodeling without causing scar tissue formation.

ADD-ON SERVICES

\$200 - Topical PRP to enhance results & accelerate healing

EXTEND TREATMENT AREA

\$169 - Neck

\$150 - Neck & Chest

PRE-BOOK SPECIAL

We recommend a HydraFacial or Dermaplaning Facial 1 week to 2 weeks after your SkinPen to help remove any remaining dead/dry skin. Typically, a 2nd monthly Diamond Member treatment is at your membership rate. Book this follow up treatment at your SkinPen appointment for a special price.

\$99 - HydraFacial or Dermaplaning Facial performed post SkinPen

**Prices are subject to change without notice. All prices listed are in addition to monthly membership dues. Some restrictions may apply. Cannot be combined with any other offer.*



Vivace Upgrade

Vivace Upgrade

TAKE IT TO THE NEXT LEVEL - UPGRADE YOUR TREATMENT

The microneedling treatment on our diamond membership is the perfect monthly treatment but if you are looking to take your treatment to the next level consider upgrading to a more powerful microneedling treatment - Vivace.

\$350 - Vivace Face

\$450 - Vivace Face and Neck

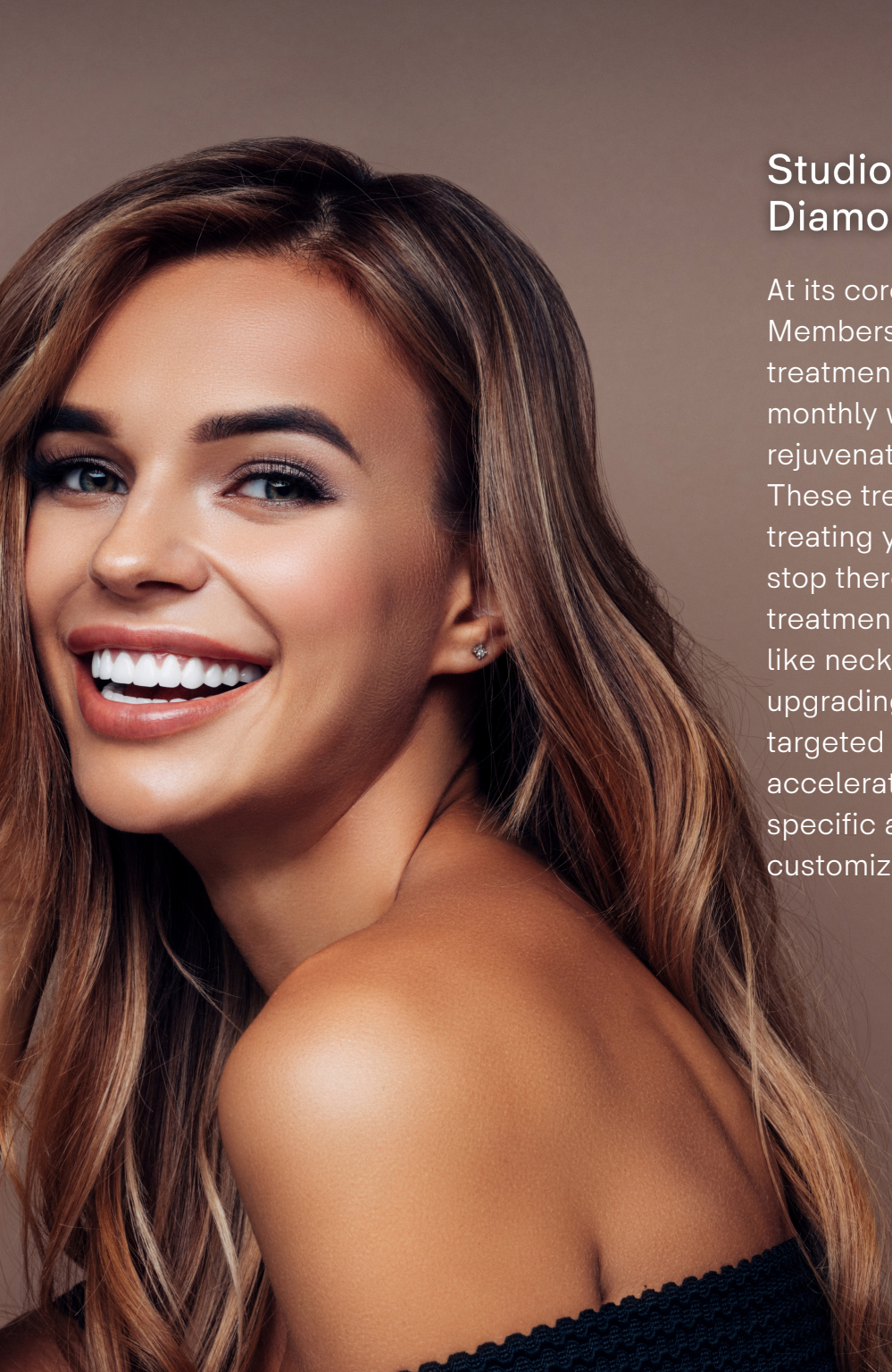
WHAT IS VIVACE?

Vivace combines microneedling and radiofrequency energy with a specialized treatment serum and cooling peptide mask to provide patients with superior, natural-looking results. It stimulates the natural production of collagen and is shown to be effective in alleviating facial wrinkles and fine lines.

HOW MUCH DOWNTIME IS NEEDED?

Most patients experience 24 - 48 hours of redness and some swelling. Most patients should avoid direct sunlight for a week following treatment or additional protection actions should be taken.

**Prices are subject to change without notice. All prices listed are in addition to monthly membership dues. Some restrictions may apply. Cannot be combined with any other offer.*



Studio Essex MedSpa Diamond Membership

At its core our Diamond Membership contains 5 targeted treatment types that when done monthly will maintain a healthy rejuvenated look - all year long. These treatments are geared at treating your face alone, but why stop there. Enhance your treatment with additional areas like neck, chest or hands. Or by upgrading to more power targeted treatments to accelerate results or target more specific aging effects for truly customized results.

